

3rd Edition Order Guide

Fastening Solutions For Masonry, Concrete and Drywall

TOGGLER[®]



wej-it[®]



HECKMANN[™]
Building Products



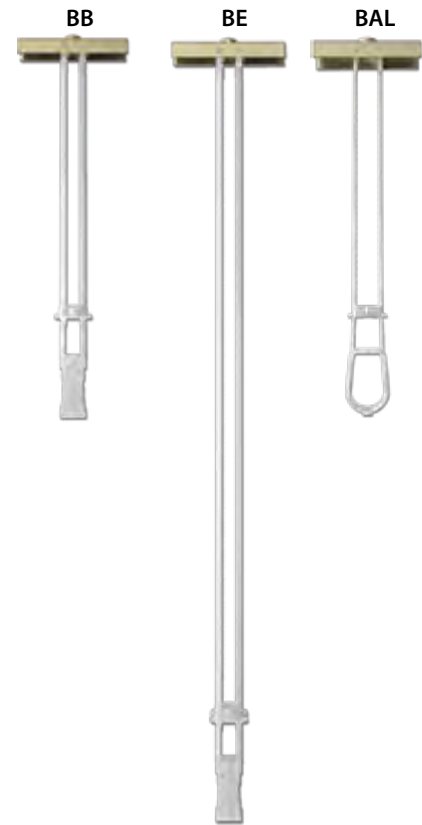
SNAPTOGGLE® Heavy-Duty Toggle Bolt



With its patented, ergonomic strap design, and metal-to-metal fastening, SNAPTOGGLE anchors allow faster installation and higher loads than standard wing anchors.

Features and Benefits

- **Ergonomic design**
 - Finger grips provide more natural handling without slipping
- **Patented strap design**
 - Will not break prematurely
 - Provides smaller ratchet intervals to adjust more precisely and snap off flush to surface
- **Requires 50% smaller hole size** than standard wing toggles
 - Maintains integrity of wall, ceiling, or floor
- **Solid metal channel** secures the bolt
 - Can use a screw gun after setting first thread by hand – anchor won't spin
 - Bolt threads never touch interior surface of hole, avoiding damage
 - Will not fall behind the wall when the bolt is removed, allowing the bolt to be reinstalled as often as desired
 - Allows use of a shorter bolt than standard toggles
- Provides high holding values, up to twice the load of standard wing toggles
 - Resists vibration and shock
- **New plating is 7x more corrosion-resistant** than B633-85 Type III/SC 1 government spec high-quality zinc plating



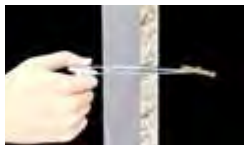
Materials/Finishes

- **Channel:** Trivalent zinc-plated cold rolled steel or 304 stainless steel
- **Straps and handle:** High-impact polystyrene
- **Cap:** Translucent polypropylene co-polymer

Applications

- Wallboard/drywall
- Steel Plate
- Hollow masonry/CMU
- Wood
- All hollow materials

Installation



1. Slide metal channel into the pre-drilled hole.



2. Hold ends of straps and pull toward you until channel rests flush behind wall or ceiling.



3. Pull back on straps and slide plastic cap along straps until flange of cap is flush with wall or ceiling.



4. Push straps side to side, snapping off straps level with wall, then discarding straps.



5. Place item over flange. Insert bolt through item and tighten until flush against item, then stop.

SNAPTOGGLE® Heavy-Duty Toggle Bolt

Zinc-Plated Carbon Steel Channels

Catalog Number	Style	Drill Dia. (in.)	Thread Size	Bolts Included*	Grip Range (in.)	Box/Bag (pcs.)	Master Carton (pcs.)
24013	BA	1/2	3/16-24	–	3/8 – 3-5/8	100	1000
24100	BA	1/2	3/16-24	Round Head	3/8 – 3-5/8	100	1000
24150	BA	1/2	3/16-24	Flat Head	3/8 – 3-5/8	100	1000
55150	BA	1/2	3/16-24	Round Head	3/8 – 3-5/8	30	150
25013	BA	1/2	3/16-24	–	3/8 – 3-5/8	50	500
50375	BA	1/2	3/16-24	Round Head	3/8 – 3-5/8	10	120
50350	BA	1/2	3/16-24	Round Head	3/8 – 3-5/8	2	200
24014	BB	1/2	1/4-20	–	3/8 – 3-5/8	100	1000
24200	BB	1/2	1/4-20	Round Head	3/8 – 3-5/8	100	500
24250	BB	1/2	1/4-20	Flat Head	3/8 – 3-5/8	100	500
55175	BB	1/2	1/4-20	Round Head	3/8 – 3-5/8	30	150
25014	BB	1/2	1/4-20	–	3/8 – 3-5/8	50	500
50425	BB	1/2	1/4-20	Round Head	3/8 – 3-5/8	10	120
50400	BB	1/2	1/4-20	Round Head	3/8 – 3-5/8	2	200
21017	BE	3/4	5/16-18	–	3/8 – 2-1/2	25	250
21015	BC	3/4	3/8-16	–	3/8 – 2-1/2	25	250
21016	BD	3/4	1/2-13	–	3/8 – 2-1/2	25	250
25029	BM5 Metric	1/2	M5 (5 mm)	–	3/8 – 3-5/8	50	500
25024	BM6 Metric	1/2	M6 (6 mm)	–	3/8 – 3-5/8	50	500
21031	BM8 Metric	3/4	M8 (8 mm)	–	3/8 – 2-1/2	25	250
21035	BM10 Metric	3/4	M10 (10 mm)	–	3/8 – 2-1/2	25	250
21049	BAL Long	1/2	3/16-24	–	3/8 – 9-1/2	50	500
21050	BBL Long	1/2	1/4-20	–	3/8 – 9-1/2	50	500
21064	BM5L Metric Long	1/2	M5 (5 mm)	–	3/8 – 9-1/2	50	500
21025	BM6L Metric Long	1/2	M6 (6 mm)	–	3/8 – 9-1/2	50	500

* All included bolts are 2-1/2" long

304 Stainless Steel Channels

Catalog Number	Style	Drill Dia. (in.)	Thread Size	Bolts Included*	Grip Range (in.)	Box/Bag (pcs.)	Master Carton (pcs.)
24020	BAS	1/2	3/16-24	–	3/8 – 3-5/8	100	1000
25020	BAS	1/2	3/16-24	–	3/8 – 3-5/8	50	500
50435	BAS	1/2	3/16-24	Round Head	3/8 – 3-5/8	2	200
24021	BBS	1/2	1/4-20	–	3/8 – 3-5/8	100	1000
25021	BBS	1/2	1/4-20	–	3/8 – 3-5/8	50	500
50440	BBS	1/2	1/4-20	Round Head	3/8 – 3-5/8	2	200
21022	BCS	3/4	3/8-16	–	3/8 – 2-1/2	25	250
21023	BDS	3/4	1/2-13	–	3/8 – 2-1/2	25	250
25030	BM5S Metric	1/2	M5 (5 mm)	–	3/8 – 3-5/8	50	500
25026	BM6S Metric	1/2	M6 (6 mm)	–	3/8 – 3-5/8	50	500
21032	BM8S Metric	3/4	M8 (8 mm)	–	3/8 – 2-1/2	25	250
21036	BM10S Metric	3/4	M10 (10 mm)	–	3/8 – 2-1/2	25	250
21059	BALS Long	1/2	3/16-24	–	3/8 – 9-1/2	50	500
21060	BBLS Long	1/2	1/4-20	–	3/8 – 9-1/2	50	500
21065	BM5LS Metric Long	1/2	M5 (5 mm)	–	3/8 – 9-1/2	50	500
21061	BM6LS Metric Long	1/2	M6 (6 mm)	–	3/8 – 9-1/2	50	500

* All included bolts are 2-1/2" long

	Base Material								Anchor Diameter	Product Material/ Coating								Page No.	
	Wet Concrete	Cracked Concrete	Normal-Weight Concrete	Lightweight Concrete	Hollow Masonry	Solid Masonry	Steel	Drywall		Wood	Zinc-Plated Carbon Steel	Plain Carbon Steel	Galvanized Steel	304 Stainless Steel	316 Stainless Steel	410 Stainless Steel	Zamac Alloy		R-Blocker Coated
Expansion Anchors																			
Ankr-TITE® CCAT Wedge Anchor	■	■	■		■				3/8" - 1"	✓				✓					
Ankr-TITE® Wedge Anchor			■	■		■			1/4" - 1-1/4"	✓	✓	✓	✓						
Original Wej-it® Wedge Anchor			■	■		■			1/4" - 1"	✓									
Sleeve-TITE™ Sleeve Anchor			■	■	▲	■			1/4" - 3/4"	✓		✓							
Threaded Anchors																			
POWER-Skru™ Large Diameter Concrete Screw			■	■	▲	■			1" - 3/4"	✓	✓		✓						
Wej-Con® Concrete Screw			■	■	■	■			3/16" - 1/4"					✓		✓			
Hang-TITE™ Rod Hanger Screw			■	■			■	■	1/4" - 1/2"	✓									
Drop-In and Shield Anchors																			
Ultra-Drop™ Drop-In Anchor			■	■		■			1/4" - 7/8"	✓		✓	✓						
Hollo Set™ Drop-In Anchor			■	■	▲	■			1/4" - 1/2"	✓					✓				
POWER-Drop™ Drop-In Anchor			■	■		■			3/8" - 1"	✓									
Single Expansion Shield			■	▲					1/4" - 5/8"						✓				
Double Expansion Shield			■	▲					1/4" - 5/8"						✓				
Short Lag Screw Shield			■	▲	▲	■			1/4" - 5/8"						✓				
Long Lag Screw Shield			■	▲	▲	■			1/4" - 5/8"						✓				
Machine Screw Shield			■	▲	▲	■			1/4" - 1/2"						✓				

Suitable ■ May be Suitable ▲ Available ✓

	Base Material								Anchor Diameter	Product Material/ Coating								Page No.		
	Wet Concrete	Cracked Concrete	Normal-Weight Concrete	Lightweight Concrete	Hollow Masonry	Solid Masonry	Steel	Drywall		Wood	Zinc-Plated Carbon Steel	Plain Carbon Steel	Galvanized Steel	304 Stainless Steel	316 Stainless Steel	410 Stainless Steel	Zamac Alloy		R-Blocker Coated	Nylon / Plastic
Drive Pin Anchors																				
Strike-It™ Center Pin Drive Anchor			■	■		■			1/4" - 3/4"	✓										
Drive-It™ Drive Pin Anchor			■	▲	▲	■			3/16" 1/4"	✓			✓			✓				
Screw-In™ Drive Screw Anchor			■	▲	▲	■			1/4"	✓						✓				
Slam-It™ Split Drive Anchor			■	■					1/4"	✓										
Pound-It™ Drive Anchor			■	■		■			3/16" - 3/8"	✓				✓						
Concrete Accessories																				
L-Bolt Anchor	■								1/2" - 1"		✓	✓								
Wej-it Wall Anchors																				
Standard Wing Toggle					■			■	1/8" - 3/8"	✓										
Self-Drilling Drywall Anchor								■	#6 - #8 screws							✓		✓		
Adhesive Anchors																				
POWER-Set™ Adhesive Insert Anchor			■	■		■			1/4" - 1"	✓			✓	✓						
Inject-TITE™ (HS) High-Strength Adhesive		■	■	■	■	■			3/8" - 1-1/4" #3 - #10 rebar										✓	
Inject-TITE™ (AW) All-Weather Adhesive			■	■	■	■			3/8" - 1-1/4" #3 - #10 rebar										✓	
Inject-TITE™ (FS) Fast-Set Adhesive			■	■	■	■			3/8" - 1-1/4" #3 - #10 rebar										✓	
Inject-TITE™ (P) Platinum Adhesive			■	■	■	■			3/8" - 1-1/4" #3 - #10 rebar										✓	
Drill Bits																				
All Styles										See descriptions										

Ankr-TITE® Wedge Anchor

This high-strength, fully threaded, and torque-controlled expansion anchor has a unique safety shoulder in the expansion cone that supports a thick 3-dimple clip engineered to **provide high load carrying capability** and **reduce slip** in a variety of installation conditions. Nut and washer included.

Features and Benefits

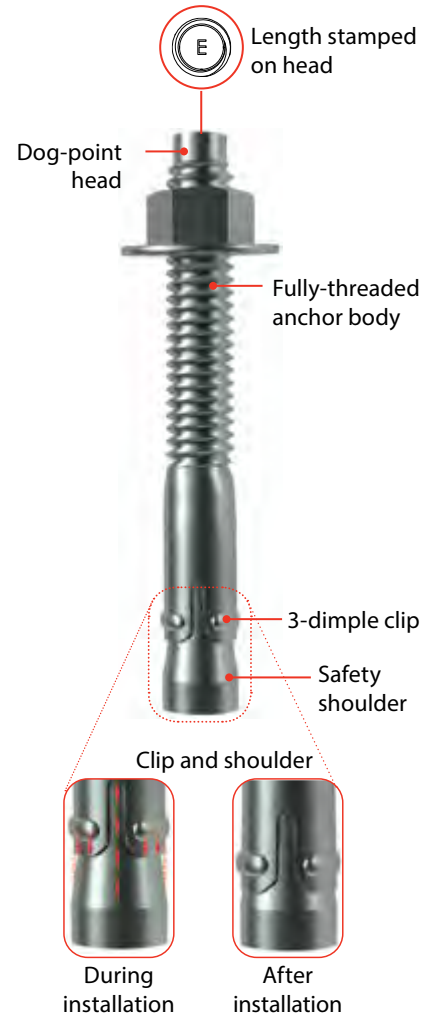
- **Length identification code** stamped on head to ease identification pre- and post-installation
- **Dog-point head** prevents point damage during installation
- **Fully threaded anchor body** accommodates various application thicknesses
- **Enlarged 3-dimple clip**
 - Increases response in lightweight concrete and requires fewer rotations to achieve desired torque
 - 360° segment contact on clip equalizes load distribution and increases load-carrying capacity
- **Unique safety shoulder**
 - Supports the 3-dimple clip under maximum and ultimate loads, preventing slippage
 - Similar products have a gradual expansion cone that does NOT have a safety shoulder to support the clip when the anchor is under strain

Materials/Finishes

- Zinc-plated carbon steel
- Hot-dip galvanized
- Type 304 stainless steel
- Type 316 stainless steel

Applications

- Normal weight concrete
- Solid masonry
- Lightweight concrete



Ankr-TITE Wedge Anchor: Zinc-Plated Carbon Steel

Catalog Number	Anchor Size	Min. Embed.	Thread Length	Box Quantity	Carton Quantity
AT1413	1/4 x 1-3/4	1-1/4	3/4	100	800
AT1421	1/4 x 2-1/4	1-1/4	1-1/4	100	800
AT1431	1/4 x 3-1/4	1-1/4	2-1/4	100	800
AT3821	3/8 x 2-1/4	1-3/4	1	50	400
AT3823	3/8 x 2-3/4	1-3/4	1-1/2	50	400
AT3830	3/8 x 3	1-3/4	1-3/4	50	400
AT3832*	3/8 x 3-1/2	1-3/4	2	50	400
AT3833	3/8 x 3-3/4	1-3/4	2-1/2	50	400
AT3850	3/8 x 5	1-3/4	3-1/4	50	400
AT3870	3/8 x 7	1-3/4	4-1/2	50	300
AT1223	1/2 x 2-3/4	2-1/8	1-1/8	25	200

Ankr-TITE® Wedge Anchor

Zinc-Plated Carbon Steel, *continued*

Catalog Number	Anchor Size	Min. Embed.	Thread Length	Box Quantity	Carton Quantity
AT1233	1/2 x 3-3/4	2-1/8	2-1/8	25	200
AT1241	1/2 x 4-1/4	2-1/8	2-5/8	25	200
AT1242	1/2 x 4-1/2	2-1/8	2-5/8	25	200
AT1252	1/2 x 5-1/2	2-1/8	3-3/4	25	150
AT1270	1/2 x 7	2-1/8	4-1/2	25	150
AT1282	1/2 x 8-1/2	2-1/8	5	10	40
AT1210	1/2 x 10	2-1/8	5	10	40
AT1212	1/2 X 12	2-1/8	5	10	40
AT5832	5/8 x 3-1/2	2-5/8	1-1/2	10	80
AT5841	5/8 x 4-1/4	2-5/8	2-3/8	10	80
AT5842	5/8 x 4-1/2	2-5/8	2-5/8	10	80
AT5850	5/8 x 5	2-5/8	3-1/8	10	80
AT5860	5/8 x 6	2-5/8	4	10	80
AT5870	5/8 x 7	2-5/8	4-1/2	10	80
AT5882	5/8 x 8-1/2	2-5/8	5	10	40
AT5810	5/8 x 10	2-5/8	5	10	40
AT5812	5/8 x 12	2-5/8	5	10	40
AT3441	3/4 x 4-1/4	3-1/4	2	10	80
AT3443	3/4 x 4-3/4	3-1/4	2-1/2	10	80
AT3452	3/4 x 5-1/2	3-1/4	3-1/4	10	60
AT3461	3/4 x 6-1/4	3-1/4	3-3/4	10	60
AT3470	3/4 x 7	3-1/4	4-3/4	10	60
AT3482	3/4 x 8-1/2	3-1/4	5	10	40
AT3410	3/4 x 10	3-1/4	5	10	40
AT3412	3/4 x 12	3-1/4	5	5	20
AT7860	7/8 x 6	3-7/8	3-1/2	5	30
AT7880	7/8 x 8	3-7/8	5	5	20
AT7810	7/8 x 10	3-7/8	5	5	20
AT7812*	7/8 x 12	3-7/8	5	5	20
AT1060	1 x 6	4	3	5	30
AT1090	1 x 9	4	5	5	20
AT1012	1 x 12	4	5	5	20
AT11490	1-1/4 x 9	5-5/8	5	4	12
AT11412	1-1/4 x 12	5-5/8	5	4	12

*Special order



Ankr-TITE Wedge Tie-Wire Anchor: Zinc-Plated Carbon Steel

Catalog Number	Anchor Size (in.)	Min. Embed.	Eye Dia. (in.)	Box Quantity	Carton Quantity
WTW1421	1/4 x 2-1/4	1-1/4	9/32	100	1000

Ultra-Drop™ Drop-In Anchor

This internally threaded, flush mount expansion anchor features a knurled body that increases friction between the anchor body and the internal walls of the hole.

Features and Benefits

- **Pre-assembled expansion bullet with a high-quality plastic cap** that prevents bullet from prematurely falling out before and during installation
- **Knurled body** increases friction with internal walls of the predrilled hole
- **Internally-threaded anchor** allows for easy bolt removability and service work
- **Eliminates requirement for rod couplings** in overhead applications
- **Two-piece anchor** comprised of internally-threaded anchor body and an expansion cone inserts: case hardened expansion bullet insert prevents galling and binding during expansion
- Anchor design **offers consistent holding power** in shallow embedment

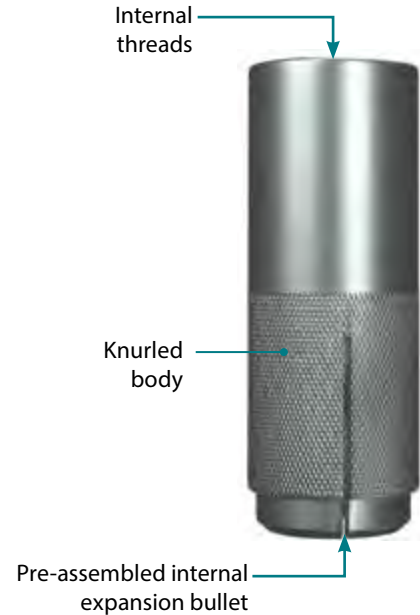
NOTE: Setting tool sold separately

Materials/Finishes

- Zinc-plated carbon steel
- Type 304 stainless steel
- Type 316 stainless steel

Applications

- Normal weight concrete
- Lightweight concrete
- Solid masonry
- Stone



Standard: Zinc-Plated Carbon Steel

Catalog Number	Drill Bit Dia.	Thread Size	Anchor Length	Box Quantity	Carton Quantity
WD14	3/8	1/4 - 20	1	100	1000
WD38	1/2	3/8 - 16	1-5/8	50	500
WD12	5/8	1/2 - 13	2	50	500
WD58	7/8	5/8 - 11	2-1/2	25	200
WD34	1	3/4 - 10	3-1/4	25	150
WD78	1-1/8	7/8 - 9	4	10	40



Lipped: Zinc-Plated Carbon Steel

Catalog Number	Drill Bit Dia.	Thread Size	Anchor Length	Box Quantity	Carton Quantity
WDL14	3/8	1/4 - 20	1	100	1000
WDL38	1/2	3/8 - 16	1-5/8	50	500
WDL12	5/8	1/2 - 13	2	50	500
WDL58	7/8	5/8 - 11	2-1/2	25	200
WDL34	1	3/4 - 10	3-1/4	25	150

Ultra-Drop™ Drop-In Anchor



Ultra-Drop Drop-In Anchor, Coil Thread: Zinc-Plated Carbon Steel

Catalog Number	Drill Bit Dia.	Thread Size	Anchor Length	Box Quantity	Carton Quantity
WDCT12	5/8	1/2 - 6	2	50	500
WDCT34	1	3/4 - 4-1/2	3-1/4	25	150



Ultra-Drop™ Drop-In Anchor, MINI: Zinc-Plated Carbon Steel

Catalog Number	Drill Bit Dia. (in.)	Thread Size	Anchor Length	Box Quantity	Carton Quantity
WDM14	3/8	1/4 - 20	5/8	100	1000
WDM38	1/2	3/8 - 16	3/4	50	500
WDM12	5/8	1/2 - 13	1	50	400



Ultra-Drop Drop-In Anchor, Standard: Type 304 Stainless Steel

Catalog Number	Drill Bit Dia.	Thread Size	Anchor Length	Box Quantity	Carton Quantity
WDS14	3/8	1/4 - 20	1	100	1000
WDS38	1/2	3/8 - 16	1-5/8	50	500
WDS12	5/8	1/2 - 13	2	50	500
WDS58	7/8	5/8 - 11	2-1/2	25	200
WDS34	1	3/4 - 10	3-1/4	25	150



Ultra-Drop Drop-In Anchor, Standard: Type 316 Stainless Steel

Catalog Number	Drill Bit Dia.	Thread Size	Anchor Length	Box Quantity	Carton Quantity
WDSS14	3/8	1/4 - 20	1	100	1000
WDSS38	1/2	3/8 - 16	1-5/8	50	500
WDSS12	5/8	1/2 - 13	2	50	500
WDSS58	7/8	5/8 - 11	2-1/2	25	200
WDSS34	1	3/4 - 10	3-1/4	25	150
WDSS78	1-1/8	7/8 - 9	4	10	40

Ultra-Drop Drop-In Anchor Setting Tools

Number	Catalog Number	Sets Anchor Thread Size	Quantity
	STM14*	1/4	1
ST38	STM38*	3/8	1
ST12	STM12*	1/2	1
ST58	-	5/8	1
ST34	-	3/4	1
ST78	-	7/8	1

* MINI Setting Tool

POWER-Sert™ Adhesive Insert Anchor

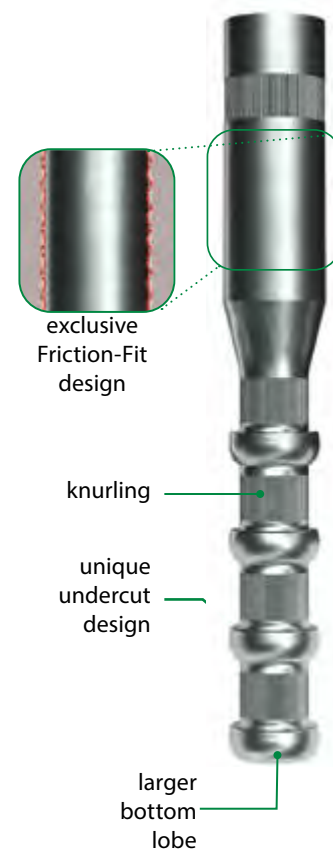
This anchor is a proprietary, internally-threaded insert designed for use with structural epoxies. Its unique undercut design requires less adhesive and a shallower embedment while providing superior holding values in a variety of base materials. Our exclusive FRICTION-FIT™ design locks the inserted anchor in place and allows immediate fastening of the fixture during cure time*. The POWER-Sert Adhesive Insert Anchor is the ultimate problem solver!

Features and Benefits

- **Exclusive FRICTION-FIT design** allows immediate fastening of fixture while adhesive cures*
- **Unique undercut design on lobes** provides superior holding values
- **Knurling between lobes** prevents rotation
- **Slightly larger bottom lobe** creates a keying effect at the deepest anchor point
- **Machine-lathed from a single piece of steel or stainless steel** – no weak points
- **Proprietary design** allows close edge distance and spacing
- **Does not apply expansion forces** to base material allows shorter spacing and edge distance requirements
- **Vibration-resistant** – adhesive bond withstands more seismic vibration loading than most standard mechanical anchors
- **Easy installation**
 - Can be installed with fixtures or equipment already in place**
 - No special tools required
 - Shallow and small diameter hole helps avoid drill-through and hitting rebar
- **Uses half the amount of epoxy** compared to other adhesive insert anchors

* FRICTION-FIT™ without full adhesive cure is for **light-duty, temporary holding only** and produces far less than advertised ultimate holding values.

** Pre-drilled hole in fixture must be large enough to accommodate correct size of carbide-drill bit.



Materials/Finishes

- Zinc-plated carbon steel
- Type 304 stainless steel
- Type 316 stainless steel

Applications

- Normal weight concrete
- Lightweight concrete
- Solid masonry



POWER-Sert™ Adhesive Insert Anchor: Zinc-Plated Carbon Steel

Catalog Number	Thread Size	Anchor Size	Box Quantity	Carton Quantity
PS2-14	1/4 - 20	5/16 x 1-9/16	100	800
PS2-56	5/16 - 18	7/16 x 2-3/8	100	800
PS2-38	3/8 - 16	1/2 x 2-3/4	50	400
PS2-12	1/2 - 13	5/8 x 3-11/16	25	200
PS2-58	5/8 - 11	7/8 x 5-3/4	10	80
PS2-34	3/4 - 10	1 x 6-1/2	5	40
PS2-1	1 - 8	1-1/2 x 8-1/2	5	15

POWER-Sert™ Adhesive Insert Anchor



POWER-Sert Adhesive Insert Anchor: Type 304 Stainless Steel

Catalog Number	Thread Size	Anchor Size	Box Quantity	Carton Quantity
PSS-38	3/8 - 16	1/2 x 2-3/4	50	400
PSS-12	1/2 - 13	5/8 x 3-11/16	25	200



POWER-Sert Adhesive Insert Anchor: Type 316 Stainless Steel

Catalog Number	Thread Size	Anchor Size	Box Quantity	Carton Quantity
PS6-14	1/4 - 20	5/16 x 1-9/16	100	800
PS6-56	5/16 - 18	7/16 x 2-3/8	100	800
PS6-38	3/8 - 16	1/2 x 2-3/4	50	400
PS6-12	1/2 - 13	5/8 x 3-11/16	25	200
PS6-58	5/8 - 11	7/8 x 5-3/4	10	80
PS6-34	3/4 - 10	1 x 6-1/2	5	40
PS6-1	1 - 8	1-1/2 x 8-1/2	5	15

Inject-TITE (HS) High-Strength Adhesive

Inject-TITE HS is a code-compliant, two-component, 1:1 mix ratio by volume, high-performance epoxy anchoring system approved for use in cartridges and in bulk with threaded rod and reinforcing bar for concrete conditions, and internally threaded inserts. It has an extended application temperature range between 43 °F and 110 °F (6°C and 43 °C).

General Uses/Applications

- Anchoring threaded rod, reinforcing bar (rebar) or internally threaded inserts
- Suitable for dry, water saturated, water-filled and submerged (underwater) conditions
- Vertical down, horizontal, upwardly inclined and overhead installations

Advantages and Features

- Building code compliant in cartridge and bulk dispensing systems, IBC/ IRC: 2018, 2015, 2012 and 2009
- Suitable for core drilled installations in dry or water saturated concrete
- Nationwide DOT approved or pending
- Made in the USA in accordance with CFR 49 section 50101

Color and Ratio

- Part A (Resin) White: Part B (Hardener) Dark Gray, Mixed Ratio: 1:1 by volume, Mixed Color – Gray

Storage and Shelf Life

- 24 months when stored in unopened containers in dry and dark conditions. Store between 40 °F (4 °C) and 95 °F (35 °C)



Inject-TITE™ (HS) High-Strength Adhesive

Catalog Number	Description	Quantity	Carton Quantity
EHS9	8.6 fl oz (254 ml) Cartridge	1	12
EHS21	21.2 fl oz (627 ml) Cartridge	1	12

* Each adhesive tube is supplied with one nozzle

THE CONTRACTOR'S CHOICE



Pos-I-Tie®
MASONRY VENEER ANCHORING SYSTEM

For over 30 years, the Pos-I-Tie® Masonry Anchoring System has been the mason contractor's premier anchor of choice.

Specified by architects and preferred by contractors, the choice is easy!

The original... and *still* the best!

THE FIRST BARREL SCREW

Premiering in 1985, the Pos-I-Tie was the first barrel-screw masonry anchor to simultaneously penetrate the exterior insulation, make positive contact with the backup for transfer of lateral loads, and seal the hole in the insulation with an EPDM washer under the barrel head.

2-in-1 CONVENIENCE

Combined with the #610 Thermal-Grip® washer, the Pos-I-Tie doubles as an insulation fastener and a masonry anchor, reducing the number of penetrations in the insulation.

THREE STYLES

- The Original Pos-I-Tie®
- The Pos-I-Tie® ThermalClip®
- The Pos-I-Tie® KeyBolt

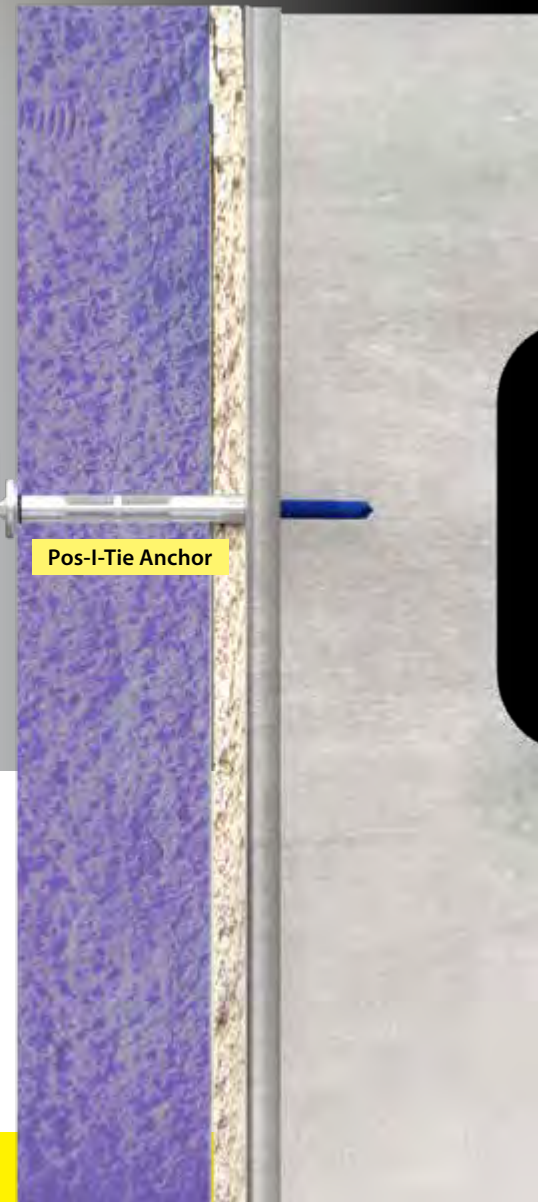
NO INFERIOR SCREWS

To ensure optimal stability and longevity, the screw is an integrated part of the Pos-I-Tie system, thus no inferior screws can be substituted. The screws themselves are heat treated and clated for maximum corrosion resistance, while the barrel is manufactured of ZAMAC 2, a 92% zinc alloy.

INSTALLS SAFELY

Other anchors with spinning wings can cause injuries during installation.

The Pos-I-Tie barrel screw installs safely with a rounded head, and round chuck adapter keeping fingers out of harm's way. This allows for consistent and efficient installation.



Pos-I-Tie® ThermalClip® with Thermal-Grip® Brick Tie Washer



Original Pos-I-Tie® Anchoing Systems

Barrel with Self-Drilling Screw



Used for:
steel stud
18 ga – 14 ga



Barrel with Concrete/CMU Screw

Used for:
concrete, CMU,
wood, brick, ICF



Barrel with Special Screw



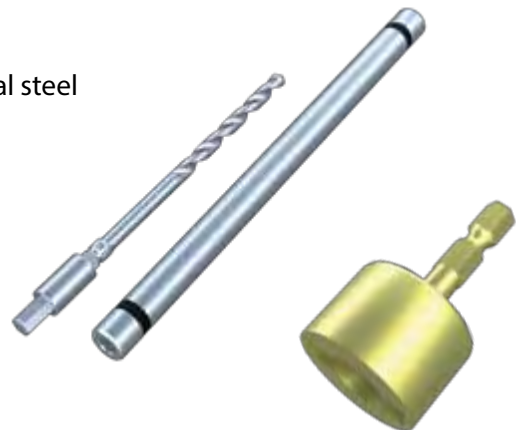
Used for:
structural steel



Original Pos-I-Tie Installation

Sleeve tool for concrete/CMU, wood, brick, and heavier structural steel installations.

- Using the sleeve saves 20% in labor time
 - No need to remove drill bit between fastening points



Triangle Tie and Seismic Triangle Wire Tie

Dimensions:

- 3/16" diameter

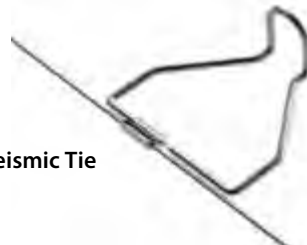
Materials:

- Mill galvanized steel
- Stainless steel
- Hot-dip galvanized after fabrication

All wire ties can be modified with a 16 gauge Seismic Hook tab for holding masonry reinforcement or pencil rod. These are factory-welded to the Pos-I-Tie® Wire Ties and meet Seismic Zone requirements. (The current building codes no longer require the use of exterior veneer reinforcement tied back through the wire ties to the backup.)



Triangle Tie



Seismic Tie

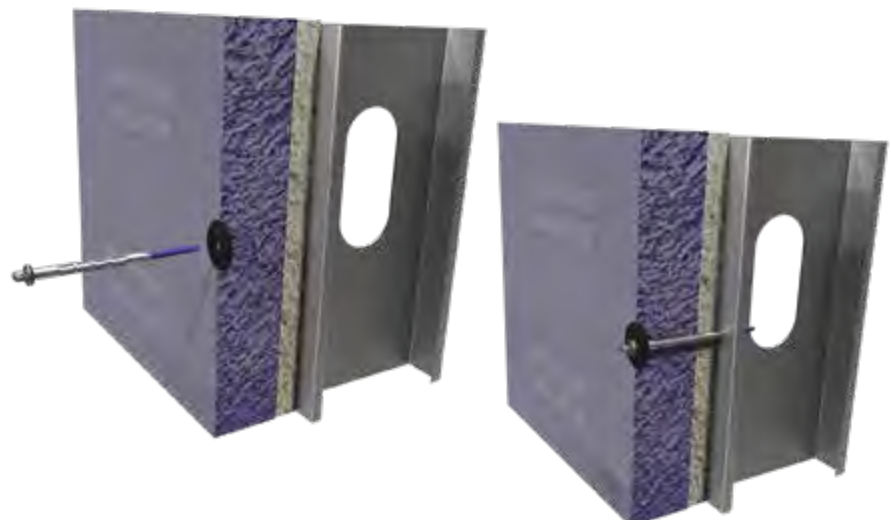
#610-S Thermal-Grip® Plastic Washers

Insulation manufacturers recommend the use of oversized washers to prevent wind blow-off during construction. These are typically installed 12" o.c. around the perimeter, and 16" o.c. throughout the sheet. Several insulation manufacturers require these washers for foil-faced insulation. Thermal-Grip washers are designed for use with the Pos-I-Tie® Veneer Anchoring System. Prongs enable pre-spotting into rigid insulation for fast on-the-wall fastener assembly.



Features

- 2" dia. plastic washer with solid cap design (no keyholes)
- Stiffened center "bullseye" ring prevents fastener pull-through
- Flexible perimeter compresses on surface
- Prongs pre-spot into insulation
- Carbon black UV stabilizers
- Use with Pos-I-Tie® Brick Veneer Anchoring System
- Flattens on surface of insulation



Pos-I-Tie® ThermalClip® System

The Pos-I-Tie ThermalClip® is designed to be used with the Original Pos-I-Tie Veneer Anchoring System. This new break-through in masonry construction adds thermal-break technology to all of the advantages of the Original Pos-I-Tie® Veneer Anchoring System. It has passed NFPA 285 Testing as part of the CavityComplete® Wall system.

Features

- Decreases thermal transfer
- Highly flame-resistant
- Prevents galvanic reaction from dissimilar metals
- Allows for vertical adjustment of 1-1/4" above and below the barrel
- Transfers compression and tension loads to structural backup
- Tolerant in "freeze-thaw" conditions and with alkaline in mortar
- Offers speedy cost-saving installation

Wire Ties

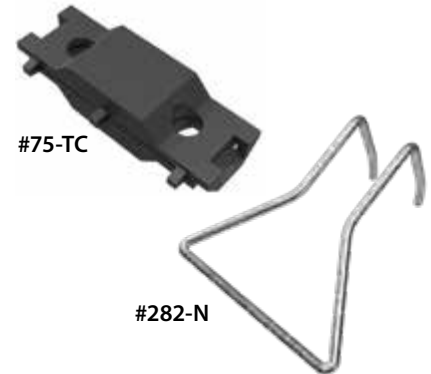
#282-N Pintle Wire Tie for Pos-I-Tie ThermalClip®

Dimensions:

- 3/16" diameter

Materials:

- Type 304 stainless steel
- Hotdip galvanized after fabrication



Pos-I-Tie® Stone Anchors

Dimensions:

- 1/8" or 3/16" thick x 2" wide only
- Vertical pintles for ThermalClip® are 1-1/8" center to center

Materials:

- Type 304 stainless steel

#78-P



#78-S



#78-U



#78-Z



wej-it

TOGGLER[®]

HECKMANN[™]
Building Products

divisions of Mechanical Plastics Corp.
110 Richards Avenue
Norwalk, CT 06854

(800) 621-4140 (USA and Canada)
(203) 857-2200

www.toggler.com
www.wejit.com
www.heckmannanchors.com

Ankr-TITE[®], Wej-It[®], Wej-Con[®], TOGGLER[®], TA[®], TB[®], TC[®], TH[®], SnapSkru[®], ALLIGATOR[®], SP[®], High-Performance Anchors[®], ThermalClip[®] are registered trademarks of Mechanical Plastics Corp.

Pound-It[™], Hang-TITE[™], Sleeve-TITE[™], Hollo Set[™], Strike-It[™], Nail-It[™], Slam-It[™], Screw-In[™], POWER-Skru[™], POWER-Drop[™], Ultra-Drop[™], TD[™], T35[™], T39[™], SNAPTOGGLE[®], POWER-Sert[™], Inject-TITE[™], Slam-TITE[™], R-Blocker[™], BA[™], BB[™], BC[™], BD[™], BE[™], BAL[™], BBL[™], BAS[™], BBS[™], BCS[™], BDS[™], BES[™], BALS[™], BBLS[™], BM5[™], BM6[™], BM8[™], BM10[™], BM5L[™], BM6L[™], BM5S[™], BM6S[™], BM8S[™], BM10S[™], BM5LS[™], BM6LS[™], SPM[™], A5[™], A6[™], A8[™], A10[™], AF5[™], AF6[™], AF8[™], TBW[™], TBS1[™], TBS2[™], Heckmann[™] are trademarks of Mechanical Plastics Corp.

SDS-max[®] and SDS-plus[®] are registered trademarks of Robert Bosch GmbH.